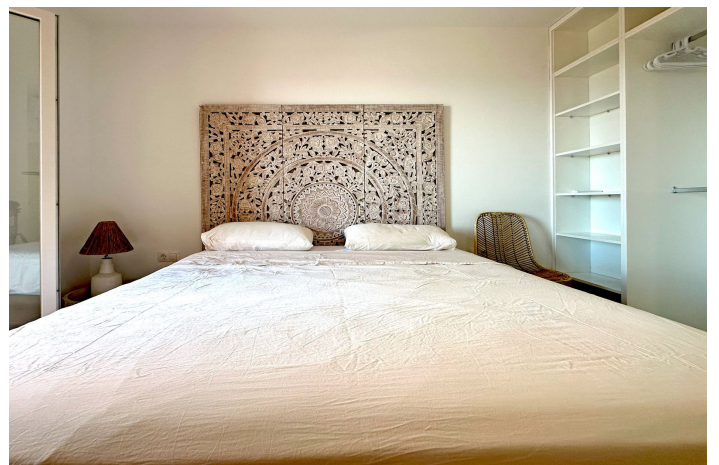
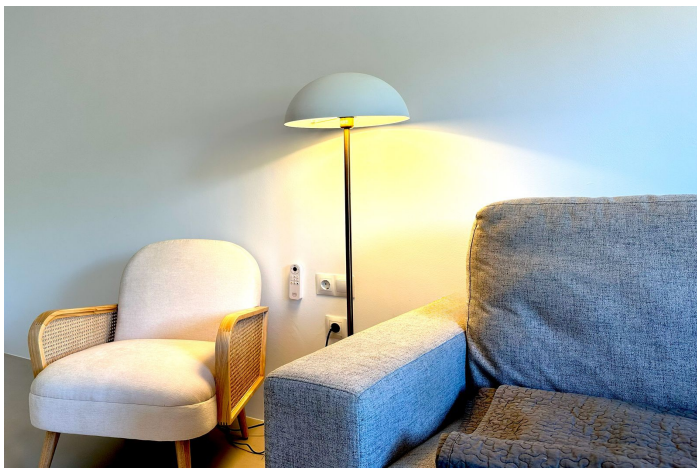


Middle Floor Apartment for sale in La Duquesa, Manilva

285,000 €

Reference: R4861504 Bedrooms: 2 Bathrooms: 2 Build Size: 96m² Terrace: 23m²



Costa del Sol, La Duquesa

This flat is located in the prestigious location of Duquesa Regent, in Manilva, Malaga, offering an incomparable setting for those seeking comfort and exclusivity. With 96m² built, 82m² interior, this property is refurbished to a very high standard, a open plan living space giving a feeling of spaciousness and enjoyment in every area of the property.

The location is perfect for those wishing to be close to all amenities, including golf courses, beaches, harbours, and schools. It is also well connected to the town centre and children's entertainment areas.

The flat comprises two spacious bedrooms, one with en-suite bathroom, and a guest toilet, providing comfort and privacy for its residents. The interior design is optimised for comfort, with individual air-conditioning in each room, and fitted wardrobes adding a touch of elegance and modernity. The kitchen is fully equipped and furnished, perfect for food lovers who enjoy cooking in a modern and functional space.

One of the strong points of this property is its views. A 23m² private terrace offers panoramic sea and mountain views, ideal for relaxing and enjoying the Mediterranean climate. Furthermore, the covered terrace provides additional space for outdoor enjoyment. The gated community, complemented by a video intercom system, ensures the security and tranquillity of its residents.

The complex boasts a communal swimming pool that offers a refreshing escape during the hot summer days, and a private garage for added convenience. Additional features include double glazing, lift access and a pet-friendly policy, making this flat an exceptional choice for families or couples looking for a home in excellent condition and with all amenities within easy reach.

Features:

Features

Covered Terrace
Lift
Private Terrace
Ensuite Bathroom
Double Glazing
Fitted Wardrobes

Views

Sea
Mountain
Panoramic
Pool
Port

Pool

Communal

Garden

Communal

Utilities

Electricity
Drinkable Water

Orientation

South West

Setting

Close To Golf
Urbanisation
Close To Sea
Close To Shops
Close To Town
Close To Schools
Town
Close To Marina

Furniture

Fully Furnished

Security

Gated Complex
Electric Blinds
Entry Phone

Category

Luxury
Resale

Climate Control

Air Conditioning

Condition

Excellent

Kitchen

Fully Fitted

Parking

Garage
Private
Covered