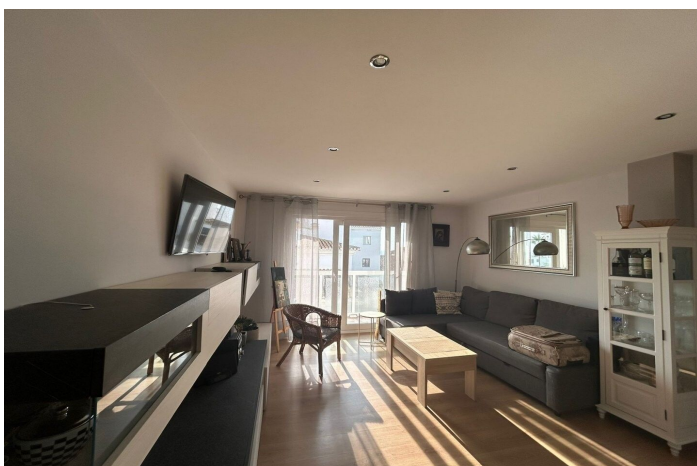
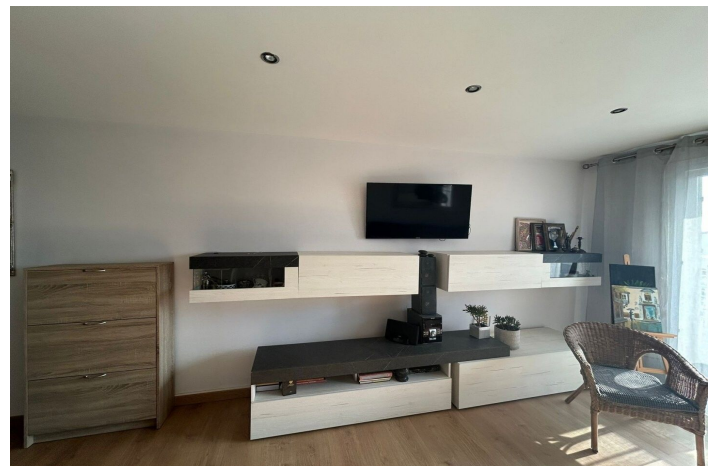


# Middle Floor Apartment for sale in San Luis de Sabinillas, Manilva

**182,000 €**

Reference: R4856107   Bedrooms: 1   Bathrooms: 1   Plot Size: 66m<sup>2</sup>   Build Size: 66m<sup>2</sup>





## Costa del Sol, San Luis de Sabinillas

Exclusive Apartment in the Heart of the La Duquesa Marina

This beautiful apartment, decorated with exquisite taste, offers you everything you need to enjoy the comfort and luxury of living by the sea. It has a modern and fully equipped American kitchen, a large bedroom with built-in wardrobes and an elegant en-suite bathroom. The living room, flooded with natural light, will take you to a beautiful glazed terrace with spectacular views of the port and the sea, where you can relax and enjoy the Mediterranean climate all year round.

Located in one of the most beautiful marinas on the Costa del Sol, this apartment is just 1 minute walk from the beach. In addition, you will have all the essential services at your fingertips: supermarkets, pharmacies, bars and restaurants. All this just 2 minutes drive from the charming town of San Luis de Sabinillas!

Featured Features:

Location in the prestigious Puerto de La Duquesa.

Panoramic views of the port and the sea.

Steps from the beach.

Close to shops, bars and restaurants.

Just 2 minutes from San Luis de Sabinillas.

This apartment is ideal as a permanent residence, vacation home or rental investment. An incomparable luxury on the Costa del Sol that you cannot miss!

Contact us today to schedule a visit and make your dream come true!

## Features:

### Features

Covered Terrace  
Lift  
Private Terrace  
Satellite TV  
Ensuite Bathroom  
Fitted Wardrobes  
Wood Flooring  
Restaurant On Site

### Orientation

South

### Climate Control

Air Conditioning

### Views

Sea  
Port

### Setting

Beachside  
Close To Golf  
Urbanisation  
Close To Sea  
Close To Shops  
Close To Marina

### Condition

Excellent

### Furniture

Fully Furnished

### Kitchen

Fully Fitted

### Category

Golf