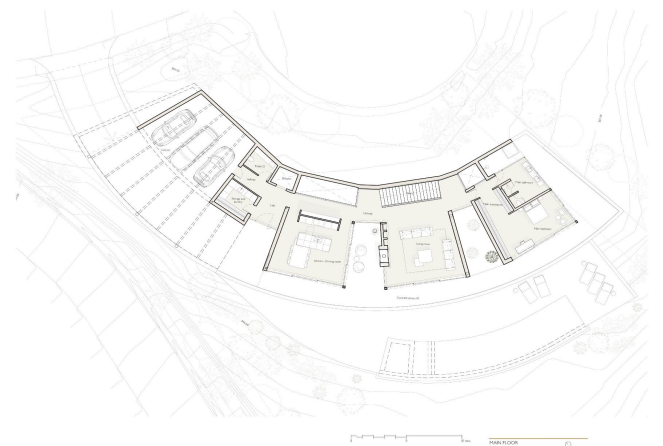
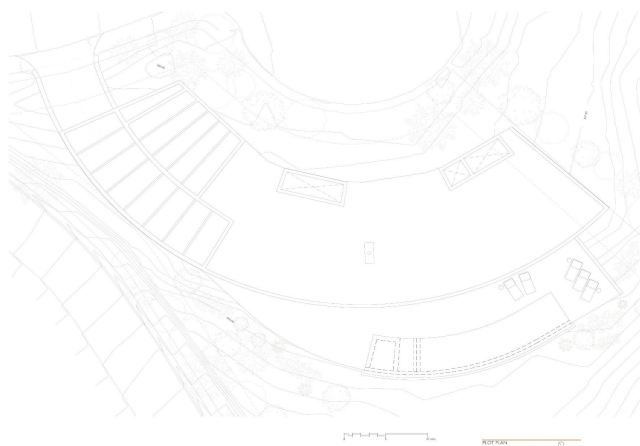


## Detached Villa for sale in Benahavís, Benahavís

**4,250,000 €**

Reference: RS10214 Bedrooms: 5 Bathrooms: 5 Plot Size: 2,219m<sup>2</sup> Build Size: 444m<sup>2</sup> Terrace: 624m<sup>2</sup>



## Costa del Sol, Benahavís

### NEW BUILD LUXURY VILLA IN BENAHAIVIS

Located on an elevated position of the Monte Mayor, New Build Villa is a stunning testament to luxury living that harmonises with its natural surroundings. This captivating property offers broad views over the valley towards the Mediterranean Sea, the surrounding mountains, and the surrounding natural preserves.

Embracing the shape of the landscape, the villa's curved structure ensures that outdoor spaces connect seamlessly with the natural terrain. From every area in the villa, whether you are swimming in the infinity pool or lounging in the living room, you feel one with nature. The open floor plan, spacious terraces, and outdoor areas create an environment of comfortable and light living in all seasons.

The property includes 5 bedrooms, 5 en-suite bathrooms, 2 guest toilets, extensive terraces, generous outdoor spaces and a swimming pool. Villa epitomizes modern elegance by integrating high-quality materials and sophisticated design elements. The property achieves a perfect balance between contemporary innovation and environmental respect, featuring a minimal footprint on the natural landscape, green roofs, optional solar energy, and drought-tolerant landscaping. For those seeking refined living in a serene and picturesque setting, Villa offers a unique opportunity to experience the ultimate in luxury and nature.

A natural setting with magnificent views and an ideal location for this Villa Close enough to the towns, beaches and amenities along the coast - secluded enough to offer a peaceful haven.

Located on the southern face of the Serrania de Ronda mountain range, Benahavís offers spectacular views and is a popular hot spot for locals and tourists alike.

## Features:

### Features

Garden

Gated

Private Pool

Double Bedrooms: 5

Number of Parking Spaces: 3

WC: 2

Views: Sea

Beach: 7000 Meters

Air Conditioning: Pre-Installed

Near Commercial Center

Near Schools

Useable Build Space: 355 Msq.

Terrace: 624 Msq.

### Energy Rating

B

### CO2 Emission Rating

B