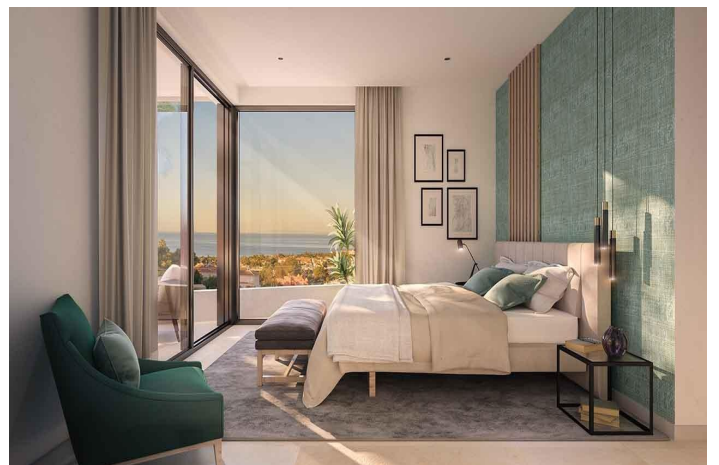
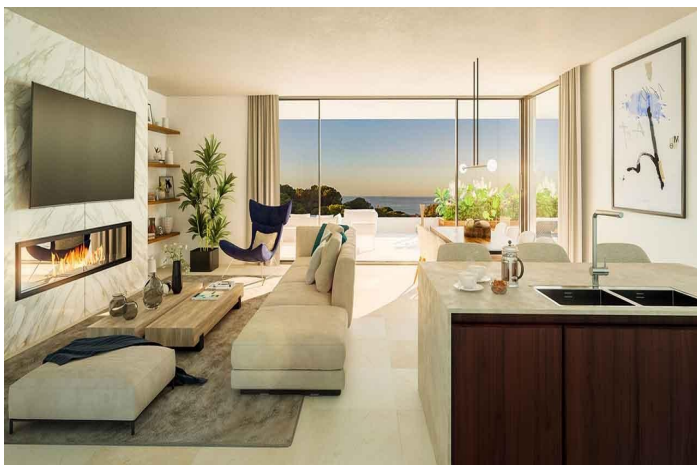


Apartment for sale in Marbella, Marbella

1,150,000 €

Reference: RS10084 Bedrooms: 3 Bathrooms: 2 Plot Size: 19m² Build Size: 164m² Terrace: 81m²



Costa del Sol, Marbella

LUXURY URBANIZATION IN MARBELLA WITH SEA VIEWS

Innovative project in Marbella, consisting of 1, 3 and 4 bedroom flats and penthouses. Spectacular sea views, and front line golf. Close to the area of Dunas de Artola which leads to the beautiful and secluded 1200m long sandy beach of fine golden sand, next to the marina.

Enclosed urbanisation with large garden areas and 2 distinct swimming pool areas. Flats created with the soul of villas. The space will be the protagonist of your new home, flooding every corner with Mediterranean light. Thanks to its large windows flush with the floor, the interior space merges with the terraces to create a sense of continuity between the open-plan rooms and the large terrace that opens onto the sea and the mountains. If you have always dreamed of waking up to the sea, now you have the opportunity to achieve your dreams.

Marbella is considered the capital of the western Costa del Sol. Bathed by the sea and sheltered from the mountains, with splendid and extensive beaches of calm waters along 27 km of coastline, natural attractions, marinas, 21 golf courses, and a wide gastronomic offer, from the typical "chiringuitos" beach bars and tapas bars, to the most luxurious Michelin-starred restaurants. All this, coupled with its microclimate with 320 days of sunshine a year, makes Marbella one of the most sought-after destinations in Spain to live in.

Features:

| Features | Energy Rating | CO2 Emission Rating |
|-------------------------------------|---------------|---------------------|
| Garden | B | B |
| Heating: Yes, Air Conditioning: Yes | | |
| Gated | | |
| Near Trees | | |
| Location: Coastal, Urbanisation | | |
| Near Bus Route | | |
| Number of Parking Spaces: 2 | | |
| Terrace: 81 Msq. | | |
| Views: Sea | | |
| Communal Pool | | |
| Near Golf / Golf Resort Property | | |
| Double Bedrooms: 3 | | |
| Key Ready | | |
| Near Commercial Center | | |
| Near Schools | | |
| Beach: 1400 Meters | | |
| Useable Build Space: 123 Msq. | | |
| Elevator/Lift | | |