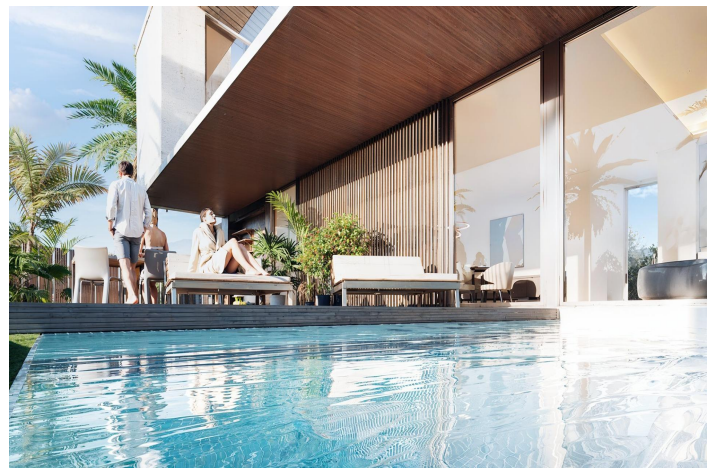


Detached Villa for sale in Estepona, Estepona

1,520,000 €

Reference: RS10031 Bedrooms: 4 Bathrooms: 4 Plot Size: 546m² Build Size: 419m² Terrace: 70m²



Costa del Sol, Estepona

NEW BUILD VILLA IN EL CAMPANARIO GOLF, NEAR ESTEPONA

An exquisite collection of 15 four-bedroom private villas, is strategically positioned on the esteemed New Golden Mile of Costa del Sol, offering a lifestyle of luxury and tranquility. These contemporary homes, designed with natural accents, provide an ideal setting near Puerto Banús and Marbella for exclusive living experiences.

The villas are nestled in the serene surroundings of Estepona, contributing to their allure as prestigious residences. With proximity to Marbella, Puerto Banús, and Estepona's natural splendor, this Villas offer a perfect blend of convenience and serenity.

The contemporary yet warm architecture of these homes redefine luxury living standards. The spacious interiors, infused with natural light and featuring sustainable elements, ensure comfort and elegance.

Each villa serves as a tranquil sanctuary, boasting thoughtfully designed living spaces and luxurious amenities. From the ground floor's inviting lounge area to the master suite's opulent features on the upper level, every corner exudes sophistication and comfort.

Outside, landscaped gardens with infinity pools and outdoor kitchens provide lavish entertainment spaces, seamlessly integrating with the natural surroundings. The lower ground floor offers customizable spaces, allowing residents to tailor their living environment to suit their lifestyle preferences.

Modern Villas offer a unique opportunity to own a luxury residence in a prime location near golf courses, beaches, and premier destinations. With a focus on beauty, comfort, and luxury, these villas set a new standard for upscale living in the Costa del Sol region.

Features

- Dining room
- Kitchen equipped
- Living room
- Guest toilet
- Air conditioning
- Barbeque
- Covered Terrace
- Domotics
- Double Glazing
- Fitted Wardrobes
- Basement
- Cinema room
- Games Room
- Gym
- Home automation system
- Office room
- Saltwater swimming pool
- Sauna
- SPA
- Video entrance

- Walk-in closet
- air-conditioning
- Orientation: South

Features:

Energy Rating

A

CO2 Emission Rating

A