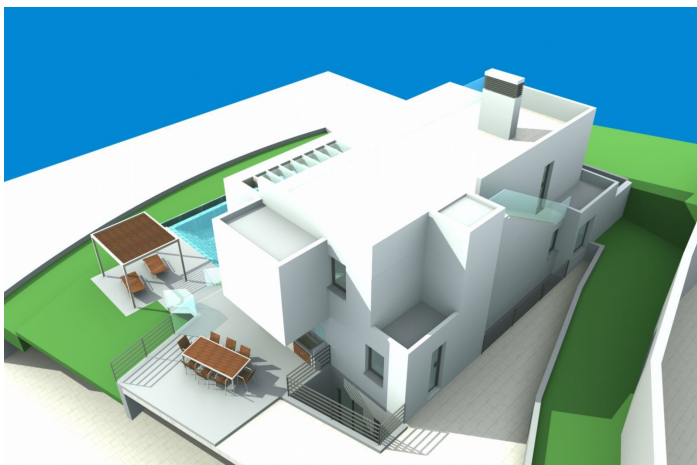
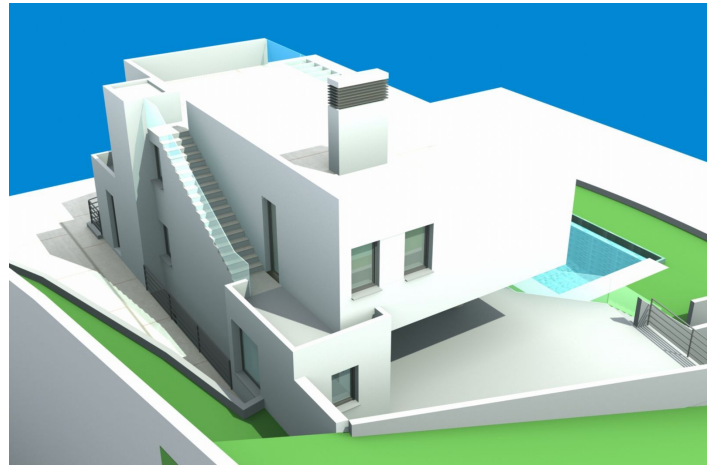
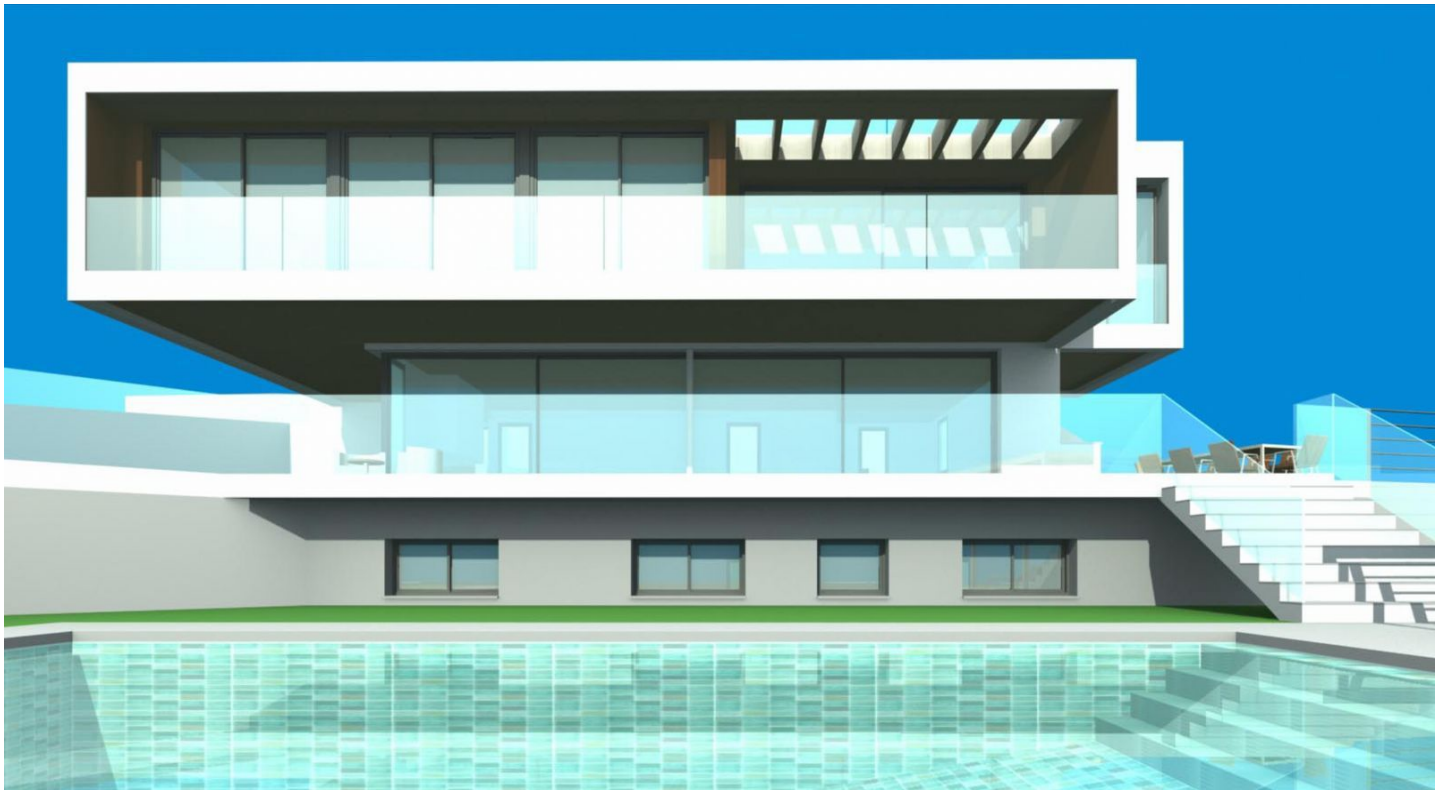


Residential Plot for sale in Mijas Pueblo, Mijas

599,999 €

Reference: R4363456 Plot Size: 1,613m² Build Size: 435m²



Costa del Sol, Mijas Pueblo

Great investment!

This plot, sold with plans and drawings of a beautiful contemporary villa, designed by a well-known London architect and developer and approved by the council, is a unique opportunity for any investor. It has 6 spacious bedrooms, 5 bathrooms, an elevator, a cinema, a gym, a garage for 3 cars, a garden and a swimming pool with views over the Costa del Sol. The plot with plan for the villa is located in a sought after gated community just 15 minutes drive from the airport, 10 minutes from the coast, Mijas Pueblo and Fuengirola and 15 minutes walking distance from two restaurants and a well known, beautiful tennis and padel club. The elderly architect/developer has arranged and paid for all the paperwork and permits and is waiting for a future resident, investor or developer to take over. There is currently nothing comparable on the market, but research shows that this villa at this location can generate around 2 million euros after construction. Short term/holiday rental yields approximately 3k per week in low season and 5k per week in high season. This plot is located next to another, somewhat smaller plot, which also has approved drawings and technical calculations of a state-of-the-art villa. In addition, there is a commercial plot without planning permission where a nursing home, boutique hotel or a spa would fit well, given the demand for these types of facilities. After all, the plots are located on a hill with a magnificent view, in the middle of nature, but in a gated community for maximum security. Ask for more information about the lots together.

Features:

Features

Covered Terrace
Lift
Private Terrace
Ensuite Bathroom
Marble Flooring
Double Glazing
Fitted Wardrobes
Gym
Basement

Views

Sea
Mountain
Panoramic
Country
Garden
Pool

Pool

Communal
Private

Security

Gated Complex

Category

Investment
Luxury
With Planning Permission
Contemporary

Orientation

South

Setting

Urbanisation
Suburban
Country

Furniture

Optional

Parking

Garage
Private
Covered
Street
More Than One

Climate Control

Air Conditioning
Cold A/C
Hot A/C

Condition

Excellent

Garden

Private

Utilities

Electricity