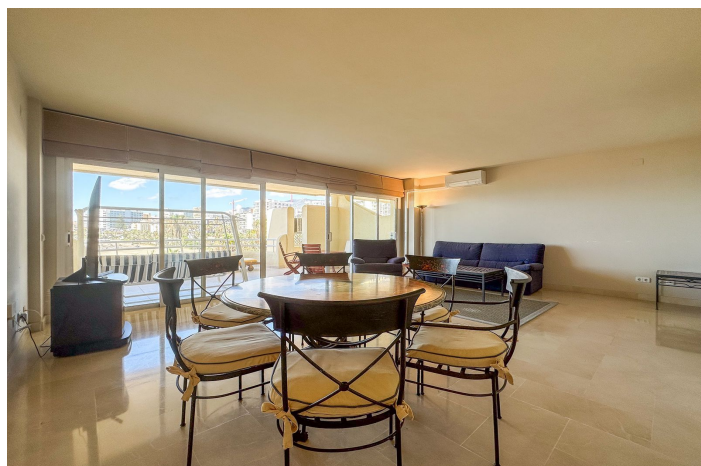


Penthouse Duplex for sale in Benalmadena Costa, Benalmádena

998,000 €

Reference: R4431397 Bedrooms: 3 Bathrooms: 3 Build Size: 157m² Terrace: 45m²



Costa del Sol, Benalmadena Costa

We present to you this spectacular duplex penthouse located in Dos Mares, a truly privileged area of Benalmadena harbour.

This exclusive property offers breathtaking views of the sea, beach and the Port of Benalmadena. Furthermore, it's location provides quick and convenient access to the beach, as well as to a wide variety of restaurants, shopping centers, and entertainment options.

On the main floor, you'll find an elegant entrance hall, a separate fully equipped kitchen looking into the spacious living-dining room that opens onto a large terrace with spectacular open views of the sea and beach.

Imagine enjoying your dinner with the sea breeze as your backdrop and open seaviews all the way to Africa.

On the same floor you find 2 double bedrooms. The first bedroom comes with an en-suite bathroom and its own sunny terrace with beautiful views over the harbour. The second bedroom has a separate high-quality bathroom in the hallway. Each bedroom comes with built-in wardrobes

The upper floor of this duplex penthouse has a spacious master bedroom with en-suite bathroom and another covered terrace with panoramic views over the port and the sea. Additionally, the building has an elevator that takes you direct to this the 4th floor. From this floor you have as well your own private access to the communal rooftop pool. This pool is heated and can be used 365 days a year, 24 hours a day.

To complete this exceptional offer, the property comes with a 17m² storage room and a 22m² parking space in the communal underground garage, which has security cameras overlooking your vehicle.

This penthouse is a unique opportunity to enjoy the ultimate quality lifestyle with all imaginable comforts in an unbeatable location.

Features:

Features

Covered Terrace
Lift
Near Transport
Private Terrace
Storage Room
Ensuite Bathroom
Marble Flooring
Double Glazing
Fitted Wardrobes
Solarium
WiFi

Views

Sea
Panoramic
Beach
Port
Urban

Pool

Communal
Heated

Security

Gated Complex
24 Hour Security
Alarm System

Category

Holiday Homes
Investment
Beachfront
Luxury
Resale

Orientation

East
South
West
South West

Setting

Beachside
Close To Port
Urbanisation
Close To Sea
Close To Shops
Close To Town
Beachfront
Port
Marina
Close To Marina
Front Line Beach Complex

Furniture

Optional

Parking

Underground
Garage

Climate Control

Air Conditioning
Pre Installed A/C

Condition

Good

Kitchen

Fully Fitted

Utilities

Electricity