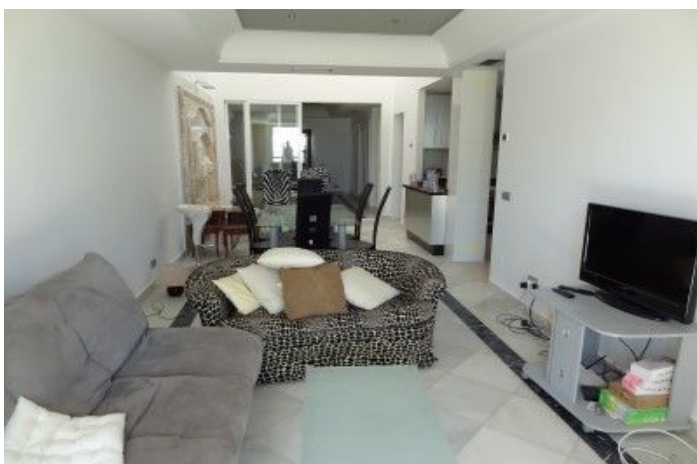


Ground Floor Apartment for sale in Puerto Banús, Marbella

4,200,000 €

Reference: R2768600 Bedrooms: 6 Bathrooms: 6 Build Size: 663m²



Costa del Sol, Puerto Banús

This unique large beachfront garden duplex occupies the front line to the beach only steps away from a private gate onto the promenade in Puerto Banus. The unique property has been sub-divided into 4 separate apartments sharing a common private entry foyer to ideally suit a large extended family or group of friends buying together, or as a rental investment. Each of the apartments has its own title deed, allowing a buyer re-sell any of the properties. Options exist to re-combine the upper or lower 2 apartments, or the entire duplex. Located right on the beachfront in central Puerto Banus, there are two apartments on the ground floor with direct garden access, and two on the first floor with private terraces. All four apartments offer wonderful sea views right on the beachfront, and have their own small kitchens and lounges. There are 2 x 2 bed apartments (145m² each) + 2 x 1 bed apartments (130 m² each) each with their own entrances. 3 underground parking spaces included. The complex also offers a large communal swimming pool and direct beach access. A unique set-up right on the beachfront in Puerto Banus.

Features:

Features

Lift
Near Transport
Private Terrace
Satellite TV
Storage Room
Ensuite Bathroom
Marble Flooring
Double Glazing
Fitted Wardrobes
WiFi
Guest Apartment
Utility Room
Jacuzzi
Barbeque
Near Mosque
Near Church

Views

Sea
Panoramic
Beach

Pool

Communal

Security

Gated Complex
Alarm System
Electric Blinds
Entry Phone

Orientation

South

Setting

Commercial Area
Beachside
Close To Port
Close To Sea
Close To Shops
Close To Town
Close To Schools
Beachfront
Town
Port
Marina
Close To Marina
Front Line Beach Complex

Kitchen

Fully Fitted

Parking

Underground
More Than One

Climate Control

Air Conditioning

Condition

Excellent

Garden

Communal

Category

Reduced
Holiday Homes
Investment
Beachfront
Luxury
Resale