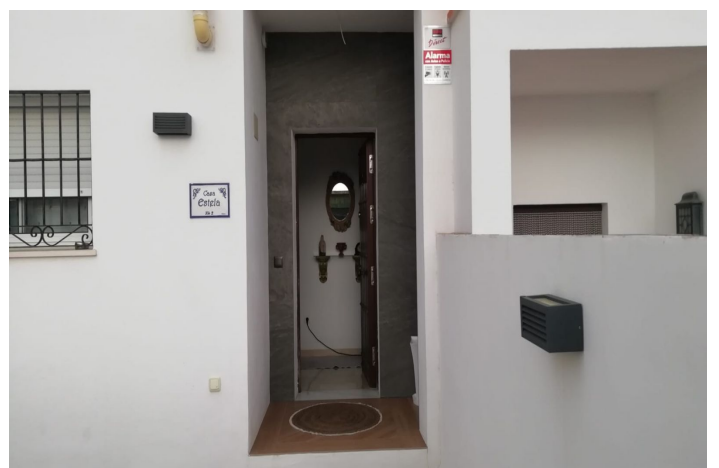


Townhouse for sale in Manilva, Manilva

409,500 €

Reference: R4250371 Bedrooms: 4 Bathrooms: 2 Build Size: 220m² Terrace: 80m²



Costa del Sol, Manilva

Exceptional townhouse at the entrance of Manilva, with panoramic views of the sea and the mountains, four levels that make it a property with many possibilities for changes. The property is in perfect condition fully furnished, with an underground garage and direct access to the house.

On the first level we have a complete bathroom, kitchen, living room, a large terrace that will allow you to enjoy the panoramic views of the sea and the mountains.

On the second floor 3 bedrooms and a bathroom, on the third level a large bedroom with the possibility of making a bathroom and a large terrace with panoramic views of the sea and mountains. The basement floor has a large garage with space for a large storage room and space for two cars.

The community has a garden and a swimming pool facing and overlooking the sea.

In this group it is constituted by approximately 15 owners. The property is located 3 minutes by car to the beach, gas stations, supermarkets, shopping centers, very close to the port of La Duquesa, Sotogrande and Estepona.

Ideal as a regular or vacation home due to its location and proximity to all the services that may be required.

Features:

Features

Covered Terrace
Near Transport
Private Terrace
Satellite TV
Storage Room
Fitted Wardrobes
WiFi
Basement

Setting

Commercial Area
Urbanisation
Close To Shops
Close To Schools
Suburban
Village

Furniture

Fully Furnished

Parking

Underground

Climate Control

Air Conditioning
Cold A/C
Hot A/C

Condition

Excellent

Kitchen

Fully Fitted

Utilities

Electricity
Drinkable Water
Telephone

Views

Sea
Mountain
Panoramic
Country
Urban

Pool

Communal

Garden

Communal

Category

Investment