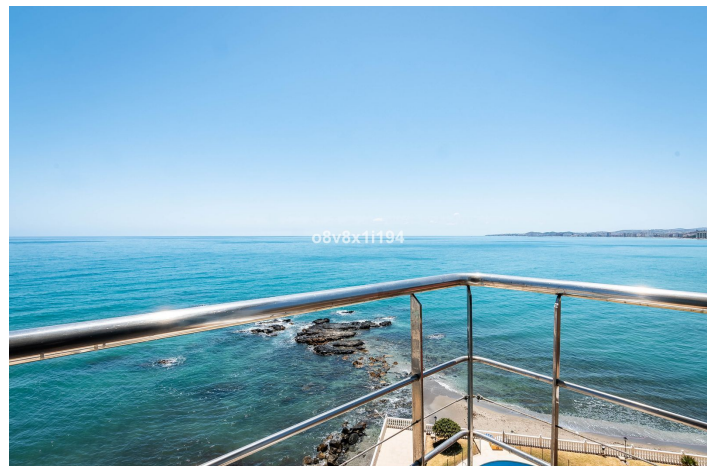
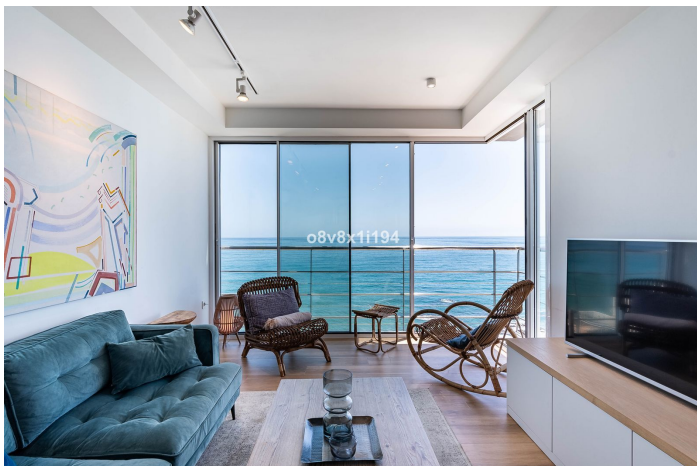


## Duplex for sale in Torremuelle, Benalmádena

420,000 €

Reference: R4449862 Bedrooms: 2 Bathrooms: 1 Build Size: 106m<sup>2</sup>



## Costa del Sol, Torremuelle

Live with cruise views!

This impressive two-bedroom, one-bathroom duplex, located on the beachfront in the charming area of Torremuelle, is an exceptional opportunity for those seeking a luxurious residence with panoramic views of the open sea. Located just steps from the prestigious British College, this 2-level duplex offers a unique living experience.

From the moment you walk in, you are greeted by stunning sea views that stretch as far as the eye can see. The intelligent design of the duplex makes the most of its privileged location, allowing natural light to flood every corner of the house. High-quality PVC windows not only maximize light entry, but also offer exceptional insulation, ensuring a calm and serene environment at all times.

The interior of the property has been completely renovated to the highest standards of quality and style. The kitchen, equipped with modern appliances, is a space where functionality meets luxury. High-quality flooring and elegant accessories add a touch of sophistication to each room.

The meticulously designed bedrooms feature built-in wardrobes offering ample storage space, while the bathroom is fitted with contemporary fittings and elegant finishes. Imagine waking up to the gentle sound of waves and stepping out onto your private balcony to enjoy the sunrise over the sea.

The complex also offers two dazzling swimming pools where you can relax and enjoy the sunny climate of the Costa del Sol. In addition, comfort is guaranteed thanks to the building's elevator, which facilitates access to your home no matter what floor you are on.

A particularly attractive feature of this property is its tourist licence, meaning it is ideal for those looking for a lucrative investment. You can take advantage of this opportunity to rent the property to tourists and visitors, generating significant income while you are not using it personally.

In short, this beachfront duplex near the British College is much more than a property; It is a lifestyle. A place where luxury meets comfort, offering unrivaled views and exciting investment opportunities. Don't miss the opportunity to make this place your ideal home or investment on the beautiful coast of Torremuelle.

## Features:

### Features

Lift  
Double Glazing  
Fitted Wardrobes

### Views

Sea  
Panoramic  
Pool

### Beach

Communal

### Security

Entry Phone

### CO2 Emission Rating

D

### Orientation

South East

### Setting

Beachfront  
Front Line Beach Complex

### Kitchen

Fully Fitted

### Category

Holiday Homes  
Beachfront  
Contemporary

### Climate Control

Air Conditioning

### Condition

Excellent  
Recently Renovated

### Garden

Communal

### Energy Rating

E