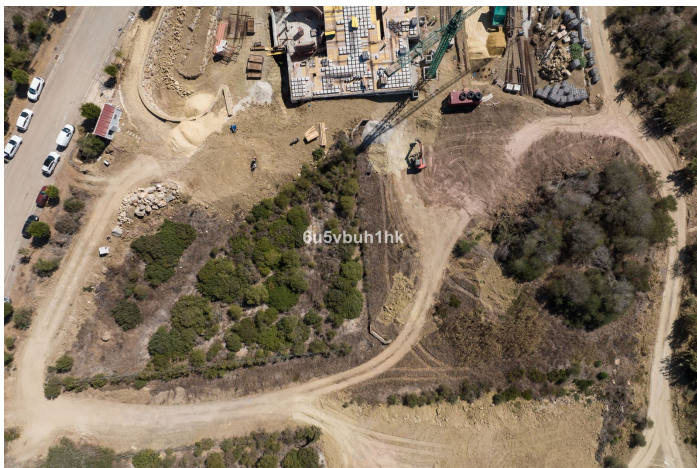


# Land for sale in Sotogrande Alto, Sotogrande

**685,000 €**

Reference: R4448071 Plot Size: 3,376m<sup>2</sup>





## Costa de la Luz, Sotogrande Alto

Imagine owning a piece of paradise on Lavanda Street, a prestigious location with breathtaking sea views, near the International School of Sotogrande and all essential services within easy reach. This exceptional plot is your canvas to create the perfect coastal retreat.

### Key Features:

**Prime Coastal Location:** Located on Lavanda Street, this plot enjoys a prime coastal setting, with mesmerizing sea views that will leave you spellbound. Every day, you'll wake up to the tranquil sound of the waves and the beauty of the Mediterranean.

**Proximity to International School:** Families will appreciate the convenience of having the International School of Sotogrande nearby. It provides top-quality education and is just a short distance away, making your daily routines smoother.

**Convenient Access to Services:** With all essential services in the vicinity, from shopping and dining to healthcare and recreational facilities, you'll have everything you need within easy reach. Life on Lavanda Street is all about comfort and convenience.

**Blank Canvas for Your Dream Home:** This plot offers a generous canvas for your dream home, allowing you to design and build a residence that perfectly suits your vision. Picture a luxurious villa with spacious interiors, a private pool, and an outdoor living space that takes full advantage of the sea views.

This plot on Lavanda Street represents an extraordinary opportunity to create a coastal haven that combines stunning natural beauty with convenience. Whether you're seeking a family retreat, a peaceful retirement escape, or a smart investment, this location has the potential to make your dreams come true.

Don't miss the chance to secure this exceptional plot. Contact us today for more information and take the first step toward turning your vision into reality.

## Features:

### Features

Near Transport

### Views

Sea

Mountain

Panoramic

Country

Garden

Golf

Urban

### Setting

Close To Golf

Close To Port

Close To Shops

Close To Town

Close To Schools