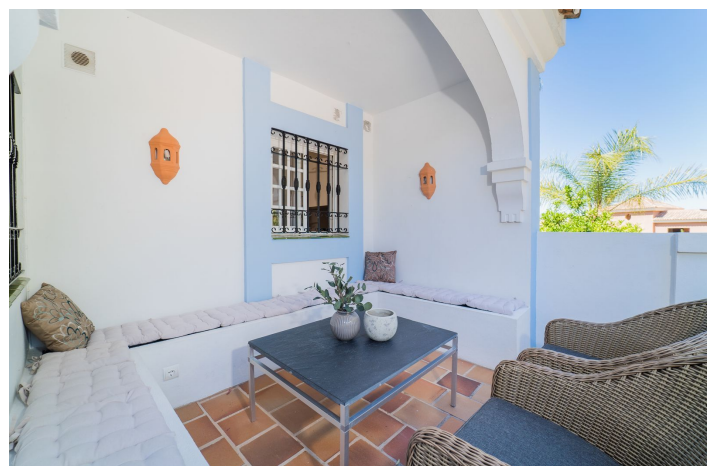


# Middle Floor Apartment for sale in Nueva Andalucía, Marbella

**359,000 €**

Reference: R4836907    Bedrooms: 1    Bathrooms: 1    Build Size: 85m<sup>2</sup>    Terrace: 85m<sup>2</sup>





## Costa del Sol, Nueva Andalucía

Large roof terrace with panoramic view!

The apartment has a very nice open floor plan between the kitchen and living room. It has a master bedroom and the possibility of two pull-out single beds in the living room. There is a bathroom with a bathtub and a washing machine. High modern standard.

It also has two private terraces. A smaller one on the lower floor with a roof and a large roof terrace with space for both a lounge and a dining area for larger groups. The roof terrace has a retractable shade cover that covers almost the entire terrace, which allows you to use the roof terrace as a living room during the day and in the evening can be used under the open sky.

The charming residential area was built in 1985 as a typical Andalusian of built up on several levels around a central square. It is picturesque, colorful and beautiful.

You can find both apartments and townhouses in the village as well as several small cafes, bars, restaurants and even a bank and a beauty salon. All this contributes to creating the cozy atmosphere.

Shops, golf, restaurants - close to all amenities

The residential area also has a well-maintained communal pool, close to this apartment, with stunning mountain views. Within walking distance of Aloha Pueblo are several other facilities such as grocery stores, hair salons and several excellent restaurants. Aloha Pueblo is also close to the vibrant residential area of Aloha Gardens which has a fantastic selection of cafes, international restaurants and bars.

For golfers, Aloha Pueblo is located in the middle of the Golf Valley and has several world-class golf courses nearby.

## Features:

### Features

Near Transport  
Private Terrace  
Fitted Wardrobes  
WiFi  
Paddle Tennis

### Views

Mountain  
Panoramic  
Golf  
Forest

### Pool

Communal

### Garden

Communal

### Category

Investment  
Golf  
Resale

### Orientation

North East  
South West

### Setting

Close To Golf  
Close To Port  
Urbanisation  
Close To Sea  
Close To Shops  
Close To Town  
Close To Schools  
Close To Forest  
Close To Marina

### Furniture

Fully Furnished

### Parking

Private  
Street

### Climate Control

Air Conditioning  
Central Heating

### Condition

Good

### Kitchen

Fully Fitted

### Utilities

Electricity