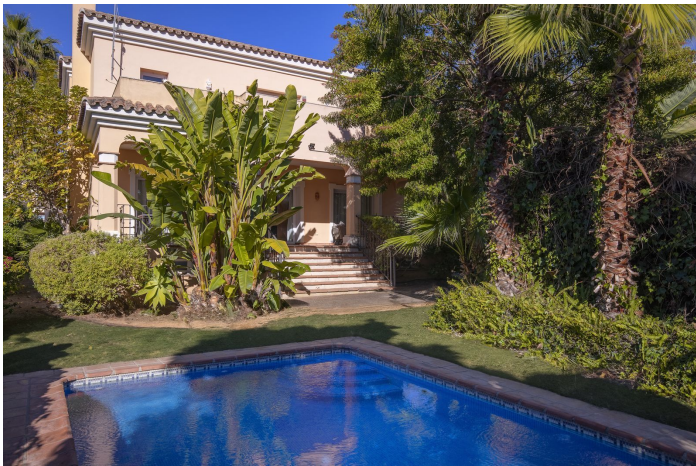


Detached Villa for sale in San Pedro de Alcántara, Marbella

1,600,000 €

Reference: R4586002 Bedrooms: 4 Bathrooms: 4 Plot Size: 565m² Build Size: 347m² Terrace: 60m²



Costa del Sol, San Pedro de Alcántara

Steps from the beach, between Guadalmina Baja and San Pedro Alcántara.

In a property investment, what determines the value of the property above all else is the location, and in this property it is all about location, location and location.

Steps away from the beach, in the exclusive area of Lindavista, between Guadalmina Baja and San Pedro Alcántara, the villa enjoys one of the most sought-after residential areas in Marbella.

Upon entering the property, the spacious living/dining room is highlighted by a fireplace, a space that communicates harmoniously with a large porch of 30 m². The porch opens onto a mature tropical garden, in the centre of which is the swimming pool.

On the ground floor there is a bedroom with en suite bathroom and a guest toilet. The kitchen is large and bright, fully equipped, functional and opens onto the back garden surrounded by fruit trees.

The first floor reveals a careful design and an ideal distribution of space, with three bedrooms and two bathrooms. The master bedroom also has a large and comfortable dressing room and a private terrace overlooking the lush garden.

The basement, with a generous 145 square metres, provides additional space for a variety of needs, whether for storage, a private gym or even the ability to customise according to your preferences.

Security is a priority in this villa, with the presence of an alarm system that provides peace of mind and protection to its residents.

To arrange a visit, please do not hesitate to contact us, it will be a pleasure to assist you.

Features:

Features

Covered Terrace
Private Terrace
Storage Room
Utility Room

Orientation

North
East
South
West

Setting

Beachside
Close To Port
Close To Sea
Close To Shops
Close To Town
Close To Schools
Town
Village
Close To Marina

Condition

Good

Kitchen

Fully Fitted

Pool

Private

Garden

Private

Furniture

Part Furnished

Security

Alarm System
Entry Phone

Parking

Garage

Private

Covered

Energy Rating

D

Utilities

Electricity

Drinkable Water

Telephone

CO2 Emission Rating

D

Category

Beachfront

Golf

Contemporary