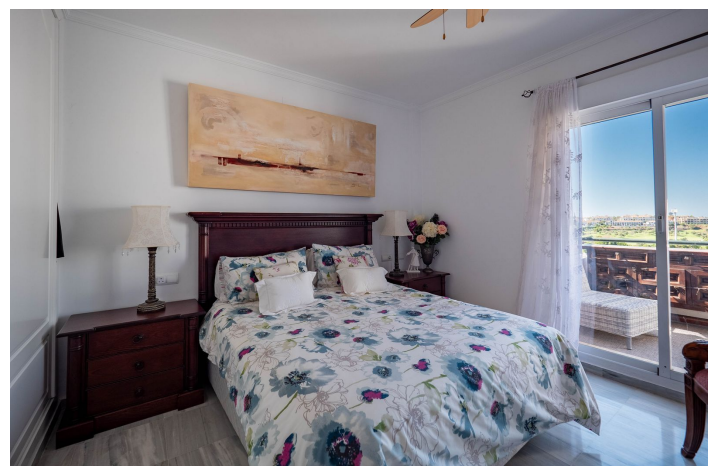


## Penthouse Duplex for sale in Alhaurín el Grande, Alhaurín el Grande

**365,000 €**

Reference: R4839883 Bedrooms: 3 Bathrooms: 2 Build Size: 126m<sup>2</sup> Terrace: 32m<sup>2</sup>





## Valle del Guadalhorce, Alhaurín el Grande

This well-presented Duplex Penthouse with lift access is located in the famous Alhaurin Golf Complex, within walking distance of bars and restaurants. The first level comprises a hallway, an open lounge/dining area enjoying golf views and direct access to two terraces, an ensuite master bedroom with an ensuite bathroom with fitted wardrobes (access to a terrace), and a recently installed modern kitchen with all the mod cons.

From the hallway, a staircase leads up to two more bedrooms, a family bathroom, a landing with fitted wardrobes, and access to a private terrace with amazing views.

The property features marble floors, hot and cold air conditioning, double glazing, fitted wardrobes, allocated covered parking, a storage room, a communal swimming pool, and a clubhouse with a restaurant.

This is an excellent investment opportunity with the potential to generate extra income from a robust rental market in both short and long-term lets. Access to the coast/beach takes about 20 minutes, and the airport takes 30 minutes. The popular Pueblos of Coin and Alhaurin El Grande are within a 10-minute drive.

Penthouse Duplex, Alhaurin Golf, Costa del Sol.

3 Bedrooms, 2 Bathrooms, Built 126 m<sup>2</sup>.

Setting : Close To Golf, Urbanisation.

Condition : Excellent.

Pool : Communal.

Climate Control : Air Conditioning, Hot A/C, Cold A/C.

Views : Mountain, Golf, Country, Panoramic.

Features : Lift, Fitted Wardrobes, Near Transport, Private Terrace, Storage Room, Ensuite Bathroom, Marble Flooring, Double Glazing, Restaurant On Site.

Furniture : Optional.

Kitchen : Fully Fitted.

Garden : Communal.

Security : Entry Phone.

Parking : Covered.

Utilities : Electricity, Drinkable Water.

Category : Resale.

## Features:

### Features

Lift  
Near Transport  
Private Terrace  
Storage Room  
Ensuite Bathroom  
Marble Flooring  
Double Glazing  
Fitted Wardrobes  
Restaurant On Site

### Setting

Close To Golf  
Urbanisation

### Furniture

Optional

### Security

Entry Phone

### Category

Resale

### Climate Control

Air Conditioning  
Cold A/C  
Hot A/C

### Condition

Excellent

### Kitchen

Fully Fitted

### Parking

Covered

### Views

Mountain  
Panoramic  
Country  
Golf

### Pool

Communal

### Garden

Communal

### Utilities

Electricity  
Drinkable Water