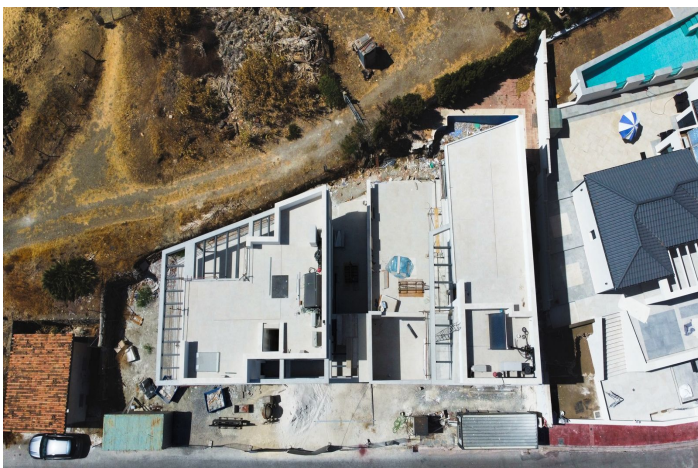


Detached Villa for sale in Nueva Andalucía, Marbella

2,950,000 €

Reference: R4775758 Bedrooms: 5 Bathrooms: 5 Plot Size: 400m² Build Size: 287m² Terrace: 100m²



Costa del Sol, Nueva Andalucía

This unique new built (under construction) contemporary villa in concrete style provides the ultimate luxury open plan living. Located in the beautiful heart of Nueva Andalucia just a minute away from Puerto Banus, walking distance to shops and to the Puerto Banus and short driving distance from Marbella center and San Pedro.

Designed across 4 floors, all accessible through the private elevator, the property offers 5 bedrooms and 5 bathrooms each with an outdoor terrace. Entrance level boasts of a large and spacious parking level for 4+2 cars with double height ceilings and a 2 bedrooms guest apartment + a studio with bathroom on street level.

Welcoming exteriors include a manicured garden which surrounds the entrance and main entrance with water heated pool, cozy lounge areas, an outdoor dining area completed with its own outdoor kitchen and BBQ area for al fresco dining and fire place with chill out area.

On the second floor you will find 2 en-suite bedrooms and a hanging gallery, with ultra high ceiling overlooking the impressive living area. The generous master suite is completed with a walk-in shower, stand alone bath and an expansive walk-in wardrobe.

A large outdoor sun terrace overlooks the pool and garden with access to the roof terrace. An expansive area with 3 separate terraces, giving you even more options for sunbathing and dining, while enjoying the breathtaking Sea and Mountain and landscape views.

Construction has been started and will be finished end of July 2024.

Features:

Features

Covered Terrace
Lift
Near Transport
Private Terrace
Storage Room
Ensuite Bathroom
Double Glazing
Fitted Wardrobes
Solarium
WiFi
Gym
Sauna
Games Room
Guest Apartment
Utility Room
Jacuzzi
Bar
Barbeque
Domotics
Day Care
Near Mosque
Staff Accommodation
Near Church
Basement
Fiber Optic
Access for people with reduced mobility

Views

Sea
Mountain
Panoramic
Country
Garden
Pool
Golf
Courtyard
Urban
Forest
Street

Pool

Heated
Private

Garden

Private
Landscaped

Orientation

South
South East
South West

Setting

Close To Golf
Close To Port
Close To Sea
Close To Shops
Close To Town
Close To Schools
Town
Close To Forest
Close To Marina

Furniture

Fully Furnished

Security

24 Hour Security
Alarm System

Climate Control

Air Conditioning
Pre Installed A/C
Cold A/C
Hot A/C
Fireplace
Central Heating
U/F Heating
U/F/H Bathrooms

Condition

New Construction

Kitchen

Fully Fitted

Parking

Underground
Garage

Easy Maintenance

Electric Blinds

Private

Entry Phone

Covered

Safe

Open

Street

Communal

More Than One

Utilities

Electricity

Drinkable Water

Telephone

Gas

Photovoltaic solar panels

Solar water heating

Category

Holiday Homes

Investment

Luxury

Contemporary