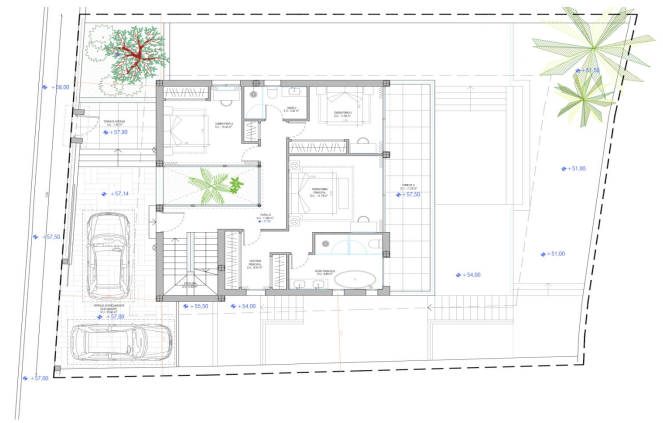
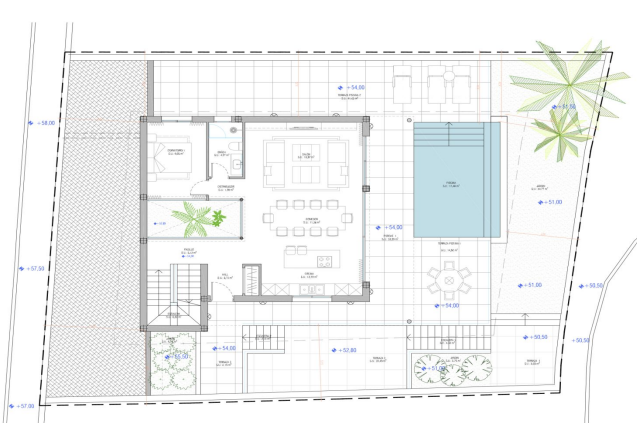
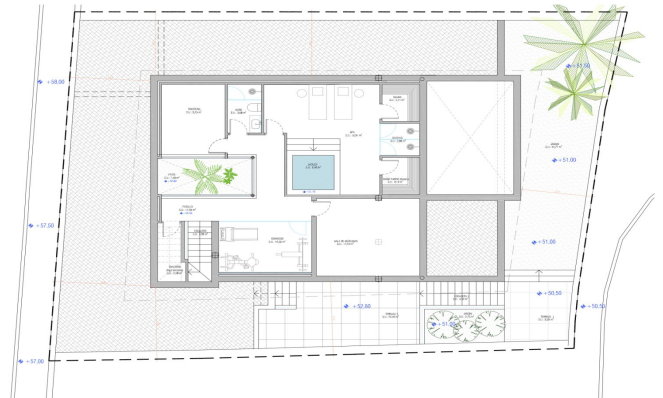


Detached Villa for sale in San Pedro de Alcántara, Marbella

1,500,000 €

Reference: R4700656 Bedrooms: 5 Bathrooms: 4 Plot Size: 384m² Build Size: 322m² Terrace: 374m²



Costa del Sol, San Pedro de Alcántara

Step into the world of modern elegance with our newest off-plan villa project, a stunning example of Scandinavian-inspired architecture blending seamlessly with contemporary luxury. This exquisite 5-bedroom, 4-bathroom villa is slated for completion in 2025, promising a harmonious fusion of style and functionality. The construction starts just in 3-4 months.

Upon entering the ground floor, you'll be greeted by a luminous living space seamlessly merging with an open-plan kitchen and dining area, perfect for entertaining gatherings of up to 10 guests. The ground level also boasts a spacious bedroom and a bathroom. Flowing effortlessly to the terrace, you'll discover a cozy lounge area and outdoor dining space, complemented by a refreshing swimming pool, creating the ultimate indoor-outdoor living experience. An adjacent uncovered terrace with sunbeds offers an additional oasis for relaxation.

Ascending to the first floor, you'll find two bedrooms sharing a bathroom on the right, while the master ensuite bedroom with a walk-in closet enjoys a privileged position. Both the third bedroom and the master suite open up to a covered terrace. This level also provides access to the property from another angle and offers an extra parking space for your convenience.

Continue upward to the solarium, a breathtaking space boasting panoramic views and a perfect setting for al fresco dining, complete with a built-in kitchen and bar area, ideal for enjoying mesmerizing sunsets.

The villa's basement is a haven of tranquility, featuring a fully-equipped gym, a versatile fifth bedroom or storage room, a bathroom, and a luxurious spa area equipped with jacuzzi, steam room, and sauna. There is parking space for two cars, a garage for one car, and an uncovered parking space.

Features:

Features

Covered Terrace
Near Transport
Private Terrace
Storage Room
Ensuite Bathroom
Fitted Wardrobes
Solarium
Sauna
Utility Room
Jacuzzi

Views

Garden
Street

Pool

Private

Garden

Private
Landscaped
Easy Maintenance

Orientation

South East

Setting

Close To Shops
Close To Schools

Furniture

Fully Furnished
Optional

Parking

Covered

Climate Control

Air Conditioning

Condition

New Construction

Kitchen

Fully Fitted

Category

Luxury
Off Plan
Contemporary