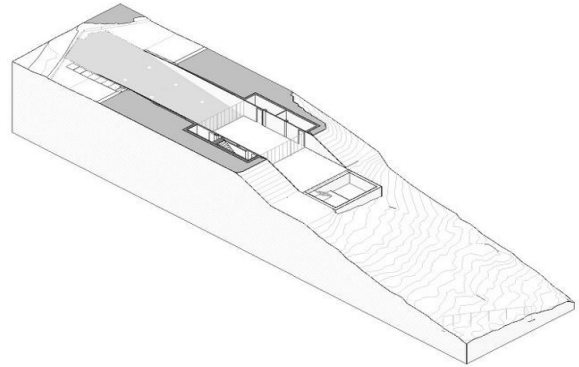
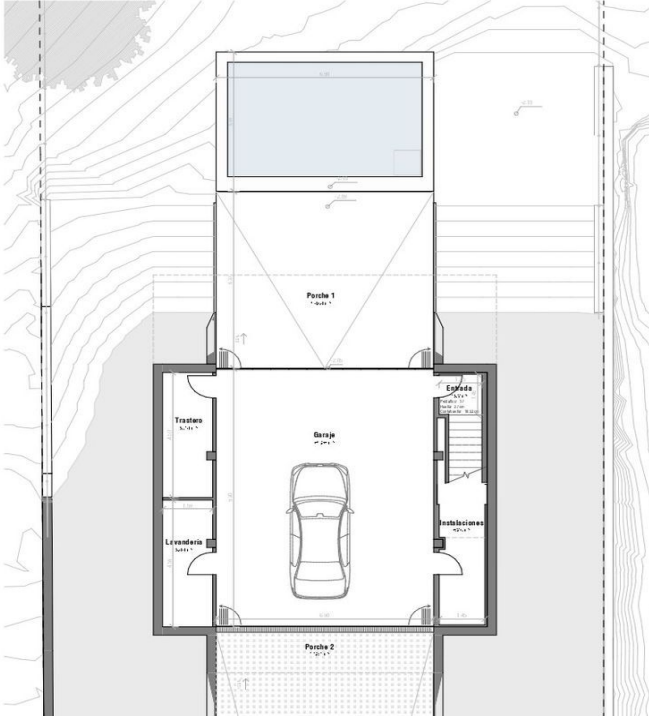


# Detached Villa for sale in Benalmádena, Benalmádena

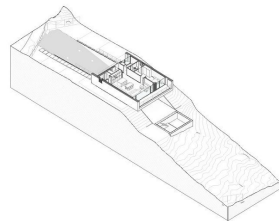
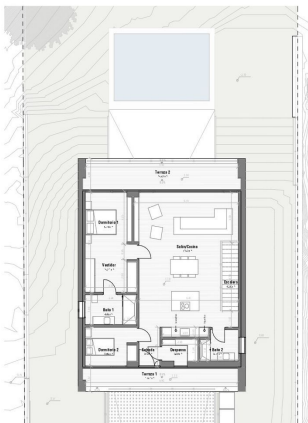
**1,395,000 €**

Reference: R4745164 Bedrooms: 4 Bathrooms: 3 Build Size: 309m<sup>2</sup>

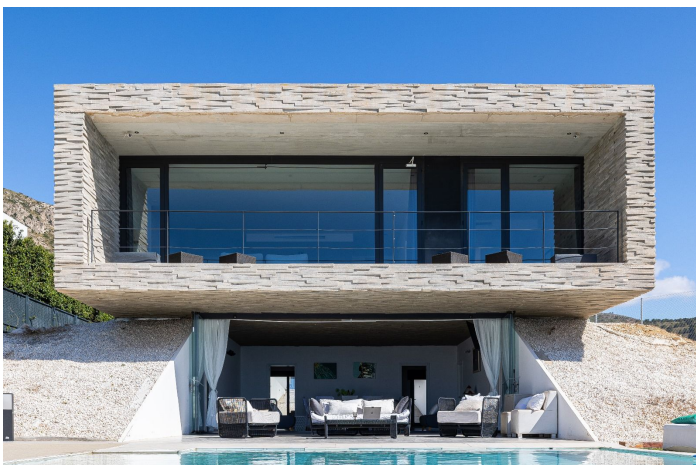


Superficie construida	
Nombre	Area
ARQ Sitano	
Planta Sitano	160,00 m <sup>2</sup>
ARQ Planta Baja	
Planta Baja	153,87 m <sup>2</sup>
Superficie construida total	309,87 m <sup>2</sup>

Superficie computable		
Nombre	Superficie útil	Superficie útil computable
ARQ Sitano		
Baño 1	4,49 m <sup>2</sup>	4,49 m <sup>2</sup>
Baño 2	3,51 m <sup>2</sup>	3,51 m <sup>2</sup>
Despacho	3,34 m <sup>2</sup>	3,34 m <sup>2</sup>
Comedor 1	9,14 m <sup>2</sup>	9,14 m <sup>2</sup>
Comedor 2	7,98 m <sup>2</sup>	7,98 m <sup>2</sup>
Entrada	3,28 m <sup>2</sup>	3,28 m <sup>2</sup>
Cocina	4,28 m <sup>2</sup>	4,28 m <sup>2</sup>
Sala/Jacuzzi	51,93 m <sup>2</sup>	51,93 m <sup>2</sup>
Tarima 1	15,07 m <sup>2</sup>	15,07 m <sup>2</sup>
Tarima 2	20,08 m <sup>2</sup>	20,08 m <sup>2</sup>
Vestidor	10,21 m <sup>2</sup>	10,21 m <sup>2</sup>
	133,08 m <sup>2</sup>	133,08 m <sup>2</sup>
ARQ Sitano		
Entrada	6,00 m <sup>2</sup>	6,00 m <sup>2</sup>
Garaje	62,86 m <sup>2</sup>	37,86 m <sup>2</sup>
Instalaciones	6,30 m <sup>2</sup>	6,30 m <sup>2</sup>
Levantería	6,44 m <sup>2</sup>	6,44 m <sup>2</sup>
Planta 1	24,04 m <sup>2</sup>	12,02 m <sup>2</sup>
Planta 2	19,81 m <sup>2</sup>	19,81 m <sup>2</sup>
Tarimas	9,14 m <sup>2</sup>	9,14 m <sup>2</sup>
	125,96 m <sup>2</sup>	88,97 m <sup>2</sup>
Superficie total	259,04 m <sup>2</sup>	222,05 m <sup>2</sup>



Superficie construida		
Nombre	Superficie útil	Superficie útil computable
Baño 1	4,49 m <sup>2</sup>	4,49 m <sup>2</sup>
Baño 2	3,51 m <sup>2</sup>	3,51 m <sup>2</sup>
Despacho	3,34 m <sup>2</sup>	3,34 m <sup>2</sup>
Comedor 1	9,14 m <sup>2</sup>	9,14 m <sup>2</sup>
Comedor 2	7,98 m <sup>2</sup>	7,98 m <sup>2</sup>
Entrada	3,28 m <sup>2</sup>	3,28 m <sup>2</sup>
Cocina	4,28 m <sup>2</sup>	4,28 m <sup>2</sup>
Sala/Jacuzzi	51,93 m <sup>2</sup>	51,93 m <sup>2</sup>
Tarima 1	15,07 m <sup>2</sup>	15,07 m <sup>2</sup>
Tarima 2	20,08 m <sup>2</sup>	20,08 m <sup>2</sup>
Vestidor	10,21 m <sup>2</sup>	10,21 m <sup>2</sup>
	133,08 m <sup>2</sup>	133,08 m <sup>2</sup>
ARQ Sitano		
Entrada	6,00 m <sup>2</sup>	6,00 m <sup>2</sup>
Garaje	62,86 m <sup>2</sup>	37,86 m <sup>2</sup>
Instalaciones	6,30 m <sup>2</sup>	6,30 m <sup>2</sup>
Levantería	6,44 m <sup>2</sup>	6,44 m <sup>2</sup>
Planta 1	24,04 m <sup>2</sup>	12,02 m <sup>2</sup>
Planta 2	19,81 m <sup>2</sup>	19,81 m <sup>2</sup>
Tarimas	9,14 m <sup>2</sup>	9,14 m <sup>2</sup>
	125,96 m <sup>2</sup>	88,97 m <sup>2</sup>
Superficie total	259,04 m <sup>2</sup>	222,05 m <sup>2</sup>



## Costa del Sol, Benalmádena

Would you like to wake up to unbeatable sea views every day?

We present this spectacular luxury villa in Benalmádena. With a modern and elegant design, this property of 309 m<sup>2</sup> built and useful is the epitome of luxury and good taste.

Distributed on the plants, the villa has four amply sleeping rooms and three designer bathrooms. The main bedroom has an en-suite bathroom and an impressive crystal front wall, allowing guests and guests to enjoy memorable moments. The lower floor accommodates a large dining room with direct access to a hermosa swimming pool and a garden with panoramic views to the sea.

The architecture of the villa is a master of clean lines and rectangular geometric structures, built with robust and elegant materials. The designer kitchen in the dining room is surrounded by crystal walls, providing a space filled with natural light and spectacular views from the sea and the swimming pool. The orientation of the villa has been carefully designed to capture the beauty of the surrounding area, offering a panorama from the sea to the surrounding mountains.

The delivery will not be more convenient. Just 10 minutes from the Málaga airport and a few minutes from other tourist destinations like Fuengirola and Marbella, this villa is the ideal location for those looking for luxury, comfort and proximity to the main tourist destinations on the Costa del Sol. With 330 days of soil last year and a media temperature above 20°C, this residence guarantees an enviable lifestyle.

¡No stones are unique opportunities! Contact our nosotros hoy mismo to arrange a visit and love your future home.

You appear private in Benalmádena you hope.