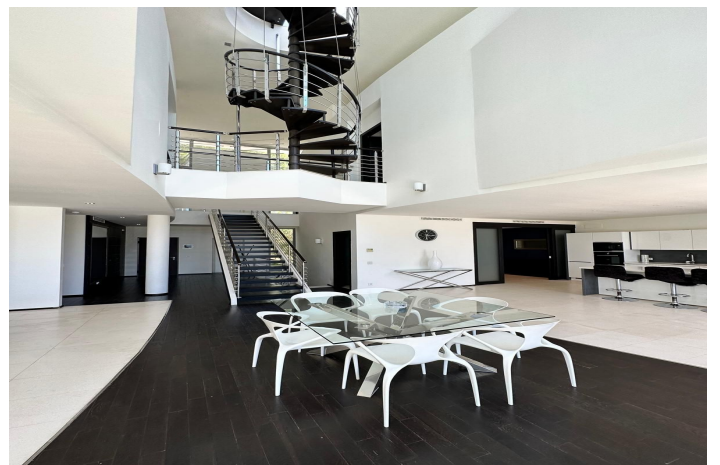
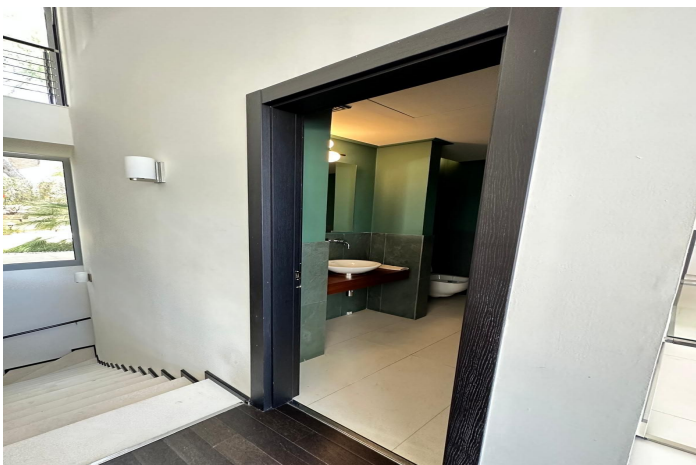


Townhouse for sale in Sierra Blanca, Marbella

3,000,000 €

Reference: R4803040 Bedrooms: 5 Bathrooms: 5 Plot Size: 150m² Build Size: 550m² Terrace: 250m²



Costa del Sol, Sierra Blanca

Welcome to an exquisite luxury townhouse located in the prestigious urbanization, nestled in the exclusive Sierra Blanca area. This magnificent property spans an impressive 800 square meters, including spacious terraces that offer breathtaking views and ample outdoor living space.

The townhouse features five generously sized bedrooms, each designed to provide the utmost comfort and privacy. Every bedroom comes with its own en-suite bathroom, ensuring a lavish and convenient living experience. The bathrooms are equipped with high-end fixtures and fittings, offering a spa-like retreat within the home.

The expansive living areas are designed with elegance and sophistication, featuring high ceilings and large windows that flood the space with natural light. The open-plan layout seamlessly connects the living room, dining area, and a state-of-the-art kitchen, perfect for both everyday living and entertaining guests.

The terraces, an integral part of the property, provide an ideal setting for relaxation and outdoor dining, offering stunning panoramic views of the surrounding landscape. These outdoor spaces are designed to maximize the enjoyment of the beautiful Mediterranean climate.

Urbanisation renowned for its luxurious amenities and services, including beautifully landscaped gardens, swimming pools, a spa, and a fully equipped gym. The gated community ensures privacy and security, providing peace of mind for residents.

This exceptional townhouse is located in Sierra Blanca, one of the most sought-after areas, known for its tranquility, natural beauty, and proximity to Marbella's vibrant city center, renowned golf courses, and pristine beaches.

Contact us today to arrange a viewing and discover your new home in one of the most exclusive addresses on the Costa del Sol.

Features:

Features

Private Terrace
Storage Room
24 Hour Reception
Fitted Wardrobes
Solarium
WiFi
Gym
Sauna
Access for people with reduced mobility

Views

Sea
Mountain
Panoramic
Garden
Pool
Forest

Pool

Private

Garden

Communal
Private

Utilities

Electricity

Orientation

East
South
West
South West

Setting

Urbanisation
Close To Schools
Close To Forest

Furniture

Fully Furnished

Security

Gated Complex
24 Hour Security

Energy Rating

A

Climate Control

Air Conditioning
Cold A/C
Hot A/C
Central Heating

Condition

Excellent

Kitchen

Fully Fitted

Parking

Underground
Garage

CO2 Emission Rating

A