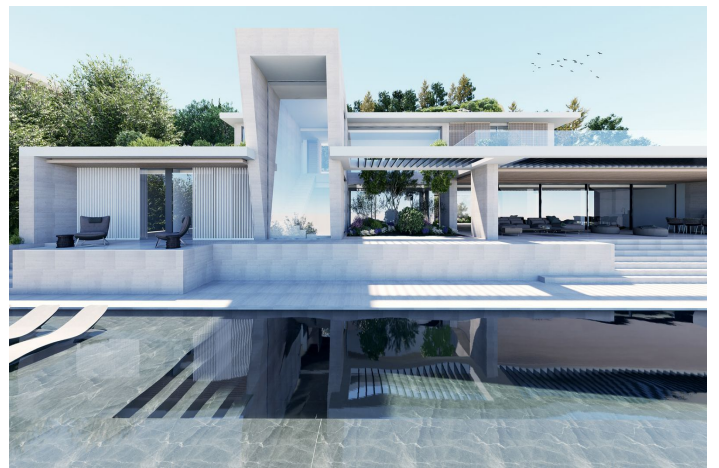
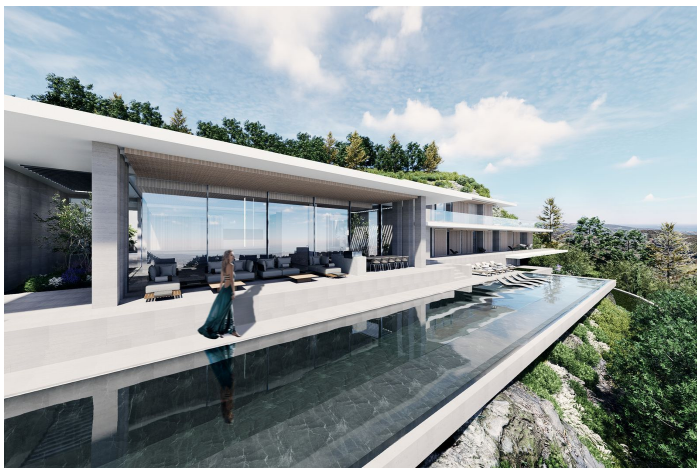


## Residential Plot for sale in Sotogrande, Sotogrande

**3,750,000 €**

Reference: R4775296 Plot Size: 8,359m<sup>2</sup> Build Size: 2,507m<sup>2</sup>



## Costa de la Luz, Sotogrande

Building plot of 8,359 m<sup>2</sup> with panoramic views of the sea and several prestigious golf courses.

Building area of 2,507.70 m<sup>2</sup>.

Located in the prestigious urbanization of 'La Reserva de Sotogrande', just 5 minutes by car from magnificent beaches and numerous golf courses, some of them very important, such as 'Valderrama', one of the best known in the world! world and ranked best course in continental Europe by Golf World magazine in 1999! Also known for having organized some of the best golf tournaments in the world.

Very close to supermarkets and shops, less than 10 minutes from the famous Sotogrande marina and 2 minutes by car from the international school.

Sotogrande is also a first-class urbanization, where you can enjoy one of the most prestigious polo tournaments in the world every summer, as well as a wide range of sports, such as tennis, paddle tennis, sailing, horse riding,...

Less than 10 minutes by car from the coast, the magnificent marina, numerous restaurants and leisure areas, 5 minutes from the supermarket and the town of Pueblo Nuevo de Guadiaro, where you will find all kinds of services. Very quiet area, with excellent views over wooded areas.

The price includes the plot + the project designed by one of the best architects in the country!

It is also possible to divide the plot into 4 parts to design 4 villas instead of one!

2117 m<sup>2</sup> = 1,150,000 EUR

1904 m<sup>2</sup> = 990,000 EUR

2108 m<sup>2</sup> = 1,150,000 EUR

2230 m<sup>2</sup> = 1,200,000 EUR

For more details please contact us.

## Features:

### Features

Fitted Wardrobes

Solarium

Utility Room

### Views

Sea

Mountain

Panoramic

Golf

Beach

Port

### Pool

Private

### Orientation

South

### Setting

Close To Golf

Close To Port

Close To Sea

Close To Town

Beachfront

Frontline Golf

Port

Marina

### Garden

Private

### Climate Control

Cold A/C

Hot A/C

### Condition

Excellent

### Security

Gated Complex

Electric Blinds